

HeartHero™ Elliot® automated external defibrillator (AED)

# THE FUTURE OF RESUSCITATION



## REDEFINE READINESS

Share time-stamped reports and ECG data straight from your phone. Get real-time alerts for motion, low battery, or pad expiration. Monitor your device anytime and know it's always rescue ready.



AMERICAN COLLEGE of CARDIOLOGY

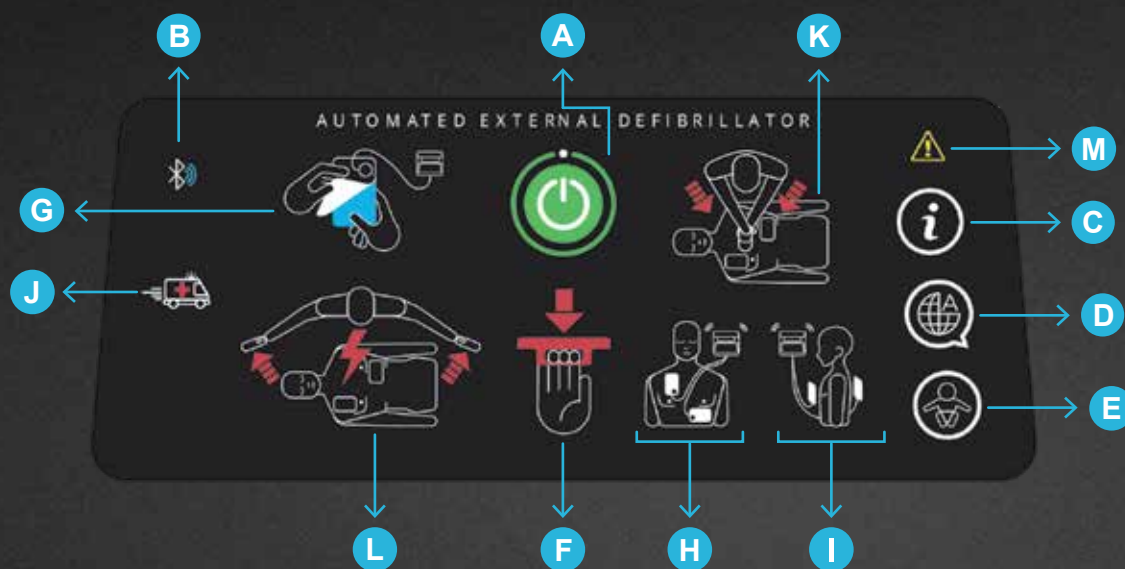
POWERED BY DURACELL

Elliot's intuitive screen is designed to guide users step by step through a life-saving response.

# USER-FIRST BY DESIGN

When activated, the display presents clear visual prompts and straightforward instructions, ensuring that anyone—regardless of experience—can take confident, immediate action. The diagram below highlights each element of the user interface and its function during use.

Audible and Visual cues



## A POWER BUTTON

Press the Power Button to turn on Elliot in the event of an emergency. Or pull the red handle.

## B BLUETOOTH ICON

A blinking Bluetooth icon means Elliot is ready to pair with the HeartHero App. A solid icon means pairing is complete.

## C INFO BUTTON

Press the Info Button to check Elliot's status. For more details, see the HeartHero App.

## D LANGUAGE BUTTON

Use this button to switch between the primary and secondary languages. Elliot will always reset to the primary language after each use.

## E CHILD BUTTON

Elliot defaults to Adult Mode. Press the Child button **before** placing the pads on the patient to switch from Adult Mode to Child Mode. Once the pads are on the patient, the button is not active. Use Child Mode for children under 55 pounds (25 kg).

## F PULL RED HANDLE

Pull the red handle to access the pads.

## G SEPARATE PADS

Peel the pads off the blue liner before applying to the patient.

## H PLACE PADS: ADULT

If the patient is an adult, place the pads on chest as shown on the pads.

## I PLACE PADS: CHILD

If the patient is a child, place the pads as shown. One on the center of bare back. One on the center of bare chest.

## J EMS ICON

### FUTURE RELEASE - COMING SOON

The EMS icon flashes while Elliot attempts to contact EMS and stays solid when help is on the way. You should also always have a human contact emergency services too! Elliot automatically contacts EMS when pads are applied (**if connected to cellular and registration is complete**). Need help with connectivity? Check the HeartHero App for status.

## K PERFORM CPR

Start CPR now. The audio prompts will guide your rhythm using clicks. Press down with each click.

## L ANALYZING/SHOCKING

Stop CPR and make sure no one is touching the patient. Any movement can interfere with the process. Elliot will analyze the heart rhythm, and a shock will be delivered if needed.

## M CAUTION

The caution symbol indicates there's an issue with the device. Press the info button, and Elliot will explain what's wrong or check the app for more details.

# SPECIFICATIONS

Compact yet powerful, every component is built for reliability in high-stress environments. From shock precision to environmental protection, these specifications reflect a device designed to perform when it matters most.



## HIGH-QUALITY SPEAKERS

Loud, clear voice prompts and alerts designed to be easily heard in noisy environments, ensuring effective communication during emergencies.

## VISUAL PROMPT PANEL / DISPLAY

Easy-to-follow lights and icons that guide users through every step of the rescue process, complementing voice instructions for maximum clarity.

## BATTERY COMPARTMENT

The compartment features a flush flap with a secure turning knob that unlocks the battery door for easy replacement.

## RED ACTIVATION HANDLE

Designed for intuitive one-step pull to power on the device and simultaneously deploy the pre-connected pad cartridge. Automatically starts clear voice and visual prompts to guide rescuers through every step.



## SHOCK POWER

Delivers 150 joules for adults; automatically reduces to 50 joules in Child Mode to match patient size.



## PEDIATRIC MODE

One-button switch for pediatric mode for patients under 55 lbs (25 kg), adjusting prompts and energy level.



## LANGUAGE SELECTION

Allows switching between two preset languages, even during an emergency, with additional languages available for download in the app.



## WARRANTY

Backed by a solid 6-year warranty with minimal maintenance required.



## WATER & DUST RESISTANCE

Tough as nails — sealed against dust and water to work flawlessly anywhere, rain or shine.



## SIZE

Compact design measuring approximately 6.3" x 6.1" x 1.7" (16 cm x 15.5 cm x 4.3 cm) with a comfortable, ergonomic grip.



## WEIGHT

Lightweight at just 1.5 lbs (0.68 kg), including battery and pads, making it effortless to carry and store.



## OPERATING TEMPERATURE

Functions reliably between:  
-4°F and 122°F (-20°C to 50°C).

Built with precision engineering and tested in extreme conditions, Elliot maintains consistent and dependable performance even in freezing cold, intense heat, or other challenging environments. You can trust it to work exactly when it's needed most.

## TRANSPORT AND STORAGE

**Shipping/Storage temperature:**  
-40° to 70°C (-40° to 158°F)

**Shipping/Storage humidity:**  
10% to 95% non-condensing

## USE CONDITIONS

**Relative Operating Humidity:**  
15% to 90% non-condensing

**Operating Altitude:**  
5,000 m (16,400 ft) maximum

## TECHNICAL CHARACTERISTICS

**Independent Adult & Pediatric Energy Protocols:**  
Adult: 150J  
Pediatric: 50J

## POWER AND COMMUNICATIONS

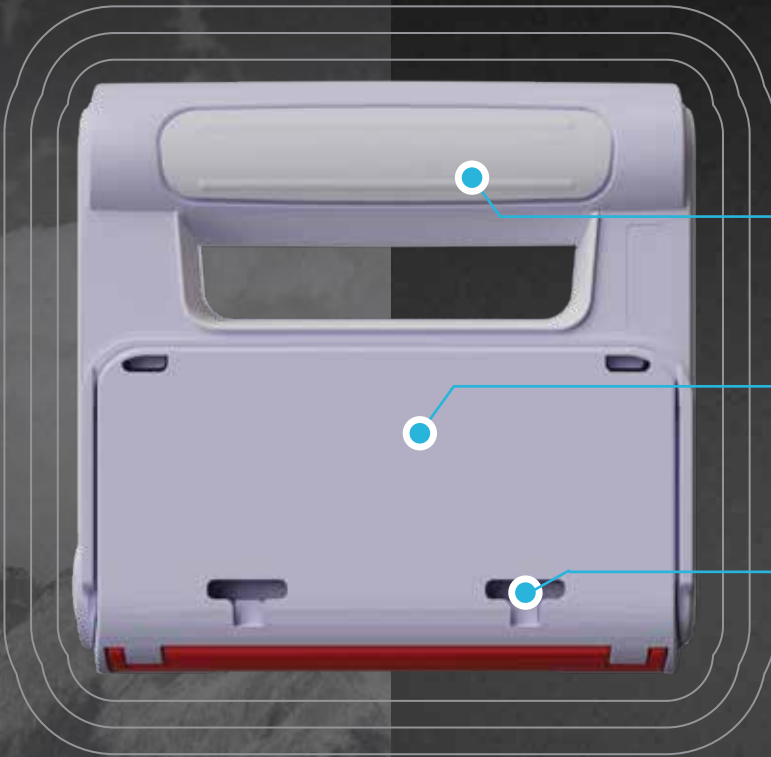
**Battery Service Life:**  
3 Years

## ELECTRODES

**Electrode Shelf Life:**  
5.5 years (1 year storage life prior to deployment + 4.5 year life installed in device)

# FEATURES

Whether you're a first-time responder or experienced in emergencies, Elliot guides you through every step with voice prompts, visual cues, and intuitive design. It's lifesaving made approachable, fast, and stress-free.



## CARRYING HANDLE

Durable handle with rubberized sides for a secure, comfortable grip—designed for easy transport and quick deployment.

## PAD CARTRIDGE

Contains sealed, pre-connected pads in a tray that effortlessly slides out when the red handle is pulled—providing fast and easy access in an emergency.

## ELECTRODE PADS

Pre-gelled pads for fast, secure placement. Optimized for effective shock delivery and easy removal. Stored inside the quick-load cartridge for immediate use.



## VOICE GUIDANCE

Provides clear, step-by-step voice instructions; no prior training required.



## START MECHANISM

One smooth pull on the red handle powers on the device and deploys pads. Intuitive in emergencies.



## VISUAL INDICATORS

Bright icons and lights guide you clearly through pad placement and next steps—no guesswork involved.



## CPR GUIDANCE

Built-in metronome keeps your chest compressions on beat, helping maintain the right rhythm for effective CPR.



## DAILY SELF-TESTS

Performs daily checks of battery and pads, and a full functional test monthly, with audible and visual alerts for faults.



## ELECTRODE PADS

Pre-connected and super-compact pads peel and stick in seconds—no fumbling, no confusion.



## DEVICE STATUS MONITORING

Stay fully informed—battery life, pad condition, and readiness alerts are all available at your fingertips via the app.



## MOBILE CONNECTIVITY

Bluetooth syncs seamlessly with the HeartHero app so you can set up the device and monitor its status with ease.



## POWERED BY DURACELL

Powered by four (4) CR123 Duracell batteries

Elliot requires no external power or charging. After three years of standby, it's ready to deliver up to 20 shocks or 40 minutes of continuous use, depending on configuration, giving you reliable performance whenever and wherever you need it.

## TECHNICAL CHARACTERISTICS

### Operation:

Fully automatic AED (pull pads to turn on and begin analysis)

### ELECTRODES

#### Electrode Pads:

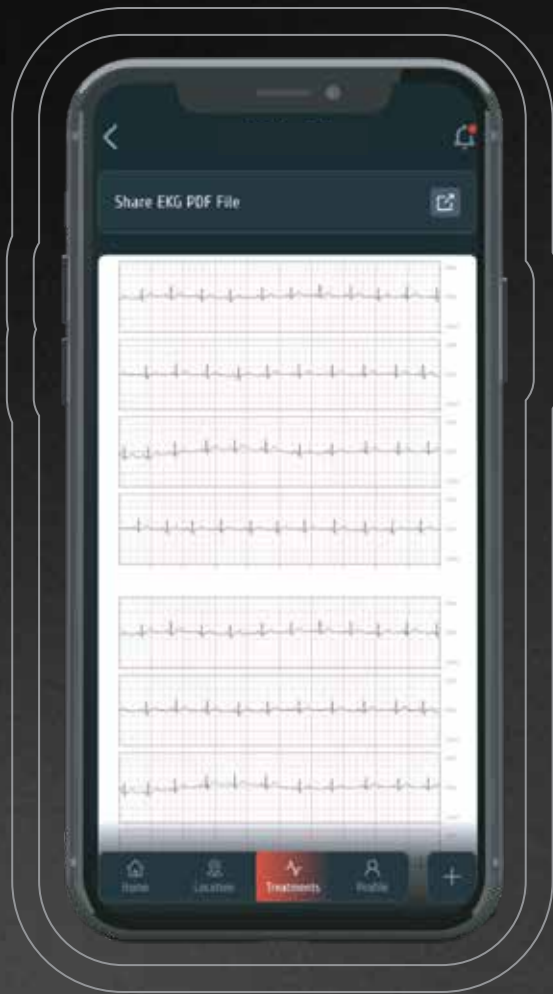
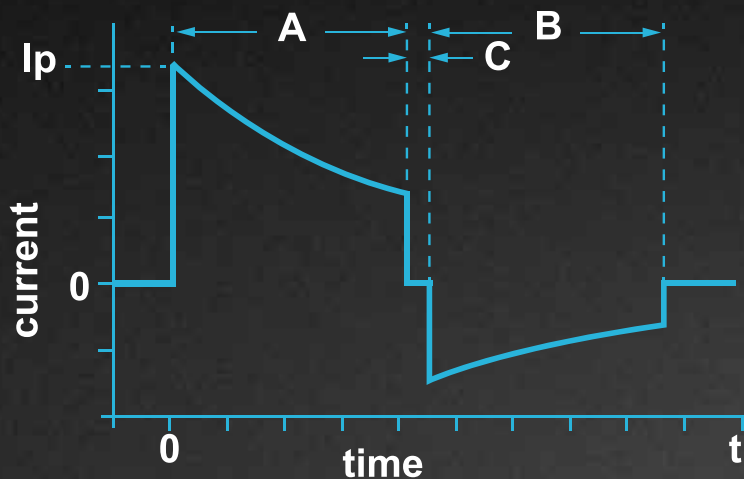
Self-adhesive; single-use



## WAVEFORM

# DEFIBRILLATION

The Elliot defibrillation waveform is a biphasic truncated exponential. The waveform phase duration automatically adjusts as a function of patient transthoracic impedance. In the diagram, A and B are the durations of phase 1 and phase 2, respectively. C is the interphase delay (500  $\mu$ s).  $I_p$  is the peak current. Elliot delivers defibrillation therapy to patient load impedances within the range of 25 to 200 ohms.



## ADULT & PEDIATRIC WAVEFORM

### ADULT Waveform Characteristics (150J +/- 15%)

Impedance ( $\Omega$ )	Phase 1 Pulse Duration (msec)	Phase 2 Pulse Duration (msec)	Peak Current (A)	Delivered Energy (J)
25	2.8	2.8	58.9	133
50	4.5	4.5	32.7	149
75	6.3	5	22.6	151
100	8	5.3	17.3	151
125	9.7	6.4	14	151
150	11.5	7.7	11.8	152
175	12	8	10.2	148

### PEDIATRIC Waveform Characteristics (50J +/- 15%)

Impedance ( $\Omega$ )	Phase 1 Pulse Duration (msec)	Phase 2 Pulse Duration (msec)	Peak Current (A)	Delivered Energy (J)
25	2.8	2.8	34.4	46.4
50	4.5	4.5	19.3	51.1
75	6.3	5	13.5	52
100	8	5.3	10.3	51.8
125	9	6	8.4	51.2
150	9	6	7.1	49
175	9	6	6.2	46.7

## ANALYSIS ALGORITHM

### Waveform Detection Performance

Rhythms	AHA Required Performance	Measured Performance
<b>Shockable</b>		
Coarse VF	>90% sensitivity	100% sensitivity
Rapid VF	>75% sensitivity	96% sensitivity
<b>Nonshockable</b>		
NSR	>99% sensitivity	100% sensitivity
AF, SB, SVT, heartblock, idioventricular, PVCs	>95% sensitivity	98% sensitivity
Asystole	>95% sensitivity	98% sensitivity

### DEFIBRILLATION WAVEFORM:

**Waveform Type:**  
Biphasic Truncated Exponential (BTE) with duration compensation for patient impedance

**Minimum Patient Impedance Range:**  
25 ohms

**Energy Output:**  
Adult: 150J (+/-15% into 50 $\Omega$  load)  
Pediatric: 50J (+/-15% into 50 $\Omega$  load)

**Maximum Patient Impedance Range:**  
200 ohms

### ANALYSIS ALGORITHM:

**Arrhythmia Detection (Shockable Rhythms):**  
VF (P-P amplitude of > 160  $\mu$ V)  
Fast VT (HR > 160 bpm adult); (HR > 200 bpm pediatric)

# CONNECTING PEOPLE, DEVICES, AND DATA IN AED RESPONSE



## AED CONNECTIVITY

- Connects with the HeartHero Elliot AED via Bluetooth® and LTE
- Displays device information including battery status, pad condition, and self-test results
- Maps and tracks locations of owned and shared devices

## EMERGENCY SUPPORT

- Offers step-by-step visual and voice prompts during use
- Displays treatment details including ECG data, shocks delivered, and CPR activity
- Configurable CPR mode: compressions-only or compressions with breaths

## TRAINING & EDUCATION

- Built-in training video accessible anytime
- Interactive device configuration for familiarization
- Dashboards and alerts highlight when device needs attention

## DATA & REPORTING

- Generates treatment summary PDF reports with ECG data and time-stamped annotations
- Secure cloud storage and access to device data, firmware, and manuals
- Multi-language support based on device settings

## COMMUNITY & NOTIFICATIONS

- Share device access with trusted family, colleagues, or caregivers
- Push notifications alert users to motion, low battery, or pad expiration
- Maps show device locations and status indicators

## USER-FOCUSED DESIGN

- Accessible Experience: Designed for both first-time users and trained responders
- Connected Ecosystem: Links AEDs, mobile technology, and cloud services for improved readiness
- Data Utility: Supports EMS handoffs, follow-up care, and quality programs
- Scalable Platform: Structured to support future features and integrations



# HEARTHERO APP FEATURES

The HeartHero App transforms AED ownership and management. From instant event reporting to live device monitoring, you'll know your AEDs are ready long before an emergency strikes. Every feature is built to minimize delays, maximize insight, and bring peace of mind that your AEDs are truly rescue ready.

# IN-APP DEVICE STATUS



Unlock the full HeartHero experience! Download the app to connect instantly with your device, check pad and battery status, receive real-time alerts, and access exclusive features.

Within the app, you'll also see a color indicator that reflects Elliot's status. Each color has a specific meaning, which you can find explained below.

## GRAPHIC COLOR: MEANING:



The gray pulsing graphic indicates that there is no Elliot connected. To connect Elliot, follow the prompts on the in-app display.



The green pulsing graphic indicates that Elliot is ready to go. Elliot is ready to help in the event of Cardiac Arrest.



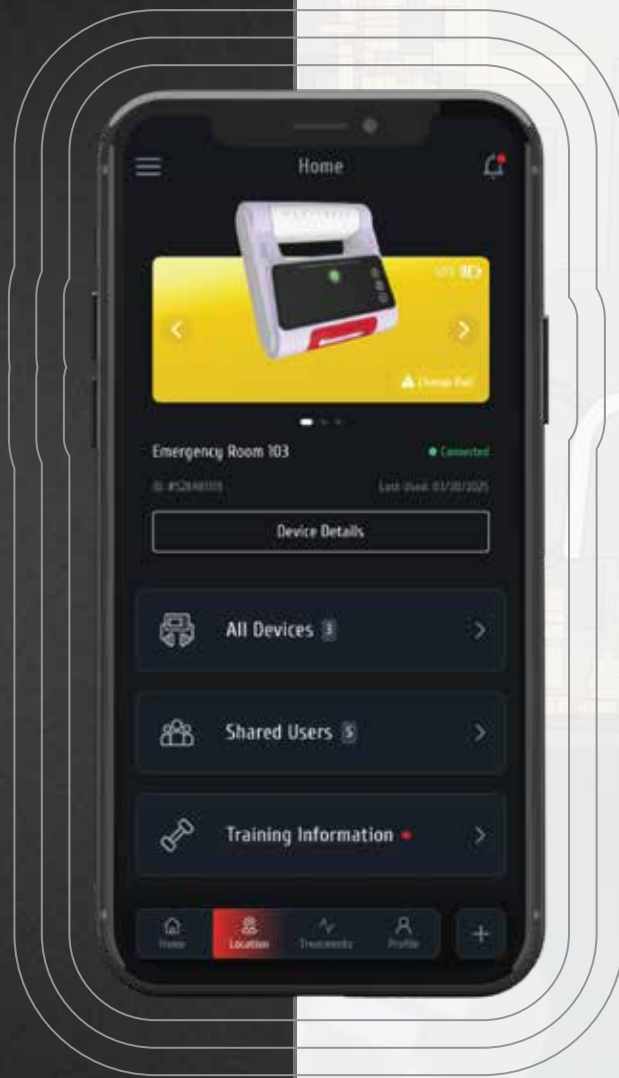
The yellow pulsing graphic indicates that maintenance of Elliot will soon be required. This could be for low batteries and/or for pads that are about to expire.



The red pulsing graphic indicates that Elliot is in critical status and maintenance is required immediately. This happens when batteries are very low and/or pads are expired.



The blue pulsing graphic indicates that Elliot is currently in use. You can click "View Event Details" to get the full report.



## SPECIFICATIONS

**Platform:**  
iPhone 11–16 (including SE), iOS 15–18

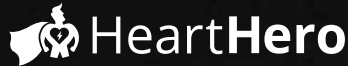
**Connectivity:**  
BLE, LTE, GPS, Cloud Services

**User Roles:**  
Unregistered, Owner, Shared User

**Data Management:**  
Encrypted storage and secure cloud sync

**Treatment Records:**  
Duration, shock count, ECG data, annotations

**Reporting:**  
Viewable and shareable PDF summaries within the app



HeartHero™ Elliot® automated external defibrillator (AED)

**BRIEF SUMMARY OF INDICATIONS AND IMPORTANT SAFETY INFORMATION**

**SUDDEN CARDIAC ARREST:** Elliot is used to treat ventricular fibrillation (VF) and pulseless ventricular tachycardia (pVT), the most common cause of sudden cardiac arrest (SCA). Defibrillation does not ensure survival, regardless of how soon treatment is administered. Cardiac arrest causes are occasionally not survivable despite all available care.

**INDICATIONS FOR USE:** The HeartHero™ AED is indicated for use on suspected adult or pediatric victims of sudden cardiac arrest. Patients in sudden cardiac arrest are unresponsive and not breathing or not breathing normally. The device is intended to terminate ventricular fibrillation and pulseless ventricular tachycardia.

**WARNINGS:** It is important to understand how to use Elliot safely. Please read these warnings and cautions carefully. • A warning describes something that could cause serious personal injury or death to the user or others. • If Elliot is used to give a shock in the presence of flammable gases such as in an oxygen tent, there is a risk of explosion. Move supplemental oxygen and oxygen delivery devices away from the defibrillation pads. (However, it is safe to use Elliot on someone wearing an oxygen mask.) • Electrical shock hazard. Do NOT open Elliot, remove its covers, or attempt a repair. There are no user-serviceable components in Elliot. If repair is required, return Elliot to an authorized service center. • Hazardous Material Disposal Device batteries are not user-serviceable or rechargeable. For replacement and disposal instructions, contact HeartHero™ support. • The use of accessories other than those sold by HeartHero™ may result in increased emissions or decreased immunity of Elliot. • Keep Elliot and batteries out of the reach of pets and small children. • Elliot batteries are not rechargeable. • Do not try to recharge, open, crush, or burn the battery, or it may explode or catch fire. • Using damaged or expired equipment or accessories may cause Elliot to perform improperly, and/or injure the victim or user. • Do not let the pads touch each other or other electrodes, lead wires, dressings, medicine patches, etc. while placing them on the patient. Such contact can cause electrical arcing and skin burns during a shock and may also divert the electrical current away from the patient's heart. During a shock, air pockets between the skin and pads can cause skin burns. To help prevent air pockets, make sure pads stick well to the skin. Do not reuse pads or use dried-out pads because they will not provide good contact with the skin. • Before delivering a shock, it is important to disconnect the patient from other medical electrical equipment, such as blood-flow meters, that may not incorporate defibrillation protection. In addition, make sure the pads are not in contact with metal objects such as a bed frame or stretcher. • Performing CPR or otherwise handling or moving the patient while Elliot is analyzing heart rhythm can cause an incorrect or delayed analysis. If Elliot tells you to keep the patient still while you are handling or moving the patient, stop the vehicle or CPR and keep the patient as still as possible for at least 15 seconds. This will give Elliot time to reconfirm the analysis before proceeding with defibrillation if necessary. • Do not use the AED in locations where large electromagnetic or RF fields are expected to occur. Keep equipment like emergency two-way radios and cell phones only as close as necessary to the patient and Elliot during use. • Do not allow the pads to contact other electrodes or metal parts that are in contact with the patient. • Do not place Elliot on patient. Only the pads should contact the patient during use.

**SHOCK HAZARD:** Do not touch the patient unless instructed to place or check the electrode pads or perform CPR with the device.

**CAUTIONS:** A caution describes something that could cause minor personal injury, damage to Elliot, loss of data stored in Elliot, or less chance of successful defibrillation • Elliot was designed to be sturdy and reliable for many different use conditions. However, handling Elliot too roughly can damage it or its accessories and will invalidate the warranty. Check Elliot and accessories regularly for damage, according to directions. Improper maintenance may damage Elliot or cause it to function improperly. Maintain Elliot according to directions. Do not open or attempt to open Elliot's sealed enclosure. • Comply with local regulations when recycling or disposing of Elliot components, consumables, and accessories.

**WHO SHOULD USE ELLIOT:** The Elliot AED is intended to be used by personnel who are familiar with the operation of the device and the warnings and precautions.

**TRAINING:** Users should have a thorough understanding of the procedures, warnings, and precautions.

**LOCAL REQUIREMENTS:** Check with your state health department to see if any local or state requirements exist regarding defibrillator use, training, and ownership.

**FOR MORE INFORMATION:** Contact your local HeartHero™ distributor for additional information about Elliot. Your distributor can answer any questions you may have. A copy of this document is also available online at [www.hearthero.com](http://www.hearthero.com).

**PLEASE CONSULT THE TECHNICAL MANUAL AT HEARTHERO.COM FOR THE COMPLETE LIST OF INDICATIONS, CONTRAINDICATIONS, WARNINGS, PRECAUTIONS, POTENTIAL ADVERSE EVENTS, SAFETY AND EFFECTIVENESS DATA, INSTRUCTIONS FOR USE AND OTHER IMPORTANT INFORMATION.**

**THE ELLIOT AED IS NOT CURRENTLY APPROVED BY THE FDA FOR SALE IN THE UNITED STATES. CONTACT HEARTHERO FOR THE LATEST MARKET CLEARANCE STATUS.**