

DorMag SmartSound

DorMag SmartSound is a wireless fire door magnet that holds fire doors open legally, automatically disengaging them to close when the fire alarm sounds.



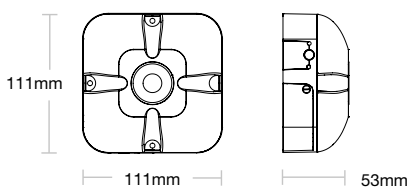
Overview

DorMag SmartSound uses advanced sound recognition technology, which allows it to identify sounds accurately. DorMag SmartSound is simple to install and operate. It uses a keeper plate that is attached to the door with DorMag mounted on the wall.

Features

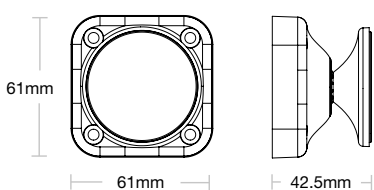
- Flexible fitting options
- Easily installed retrofit solution
- Battery powered
- Advanced SmartSound listening technology

DorMag SmartSound unit



Length	111mm
Width	111mm
Depth	53mm

Door Keeper



Length	61mm
Width	61mm
Depth	42.5mm

Specification Overview

Power	4.5V Lithium Iron Disulfide (Li/FES2) battery pack
Colour	Black with silver band
Warranty	2 years
Casing	ABS / ABS+PC plastic
Weight	0.52kg
Installation position (DorMag SmartSound)	On the wall adjacent to the door, with the DorMag SmartSound magnet fully centred with the keeper plate
Installation position (Door Keeper)	Anywhere on the back of the door
Maximum door to wall depth (when door is fully opened, adjacent to the wall)	95mm (keeper chain or floor bracket required for greater distances)
Maximum door to wall angle (when door is fully opened, adjacent to the wall)	Plus or minus 25° from parallel
Minimum door to wall angle (when door is closed)	65°
Hold open positions	Can hold the door open at any angle (dependant on add-ons, i.e. floor bracket & keeper chain)
Activation	SmartSound listening technology
Audible warning	Yes
Maximum door size	Power size 5 (max of 100kg and 1250mm width)
Fire rating	DorMag has been tested to EN1634-1 on FD30 doorsets, exposed and unexposed faces
Compliant to	EN1155:1997+A1:2002, EN1634-1:2008, EMC Directive, Radio Equipment Directive, UN 38.3 Lithium certification, CE Marked, UKCA Marked
Classification	Standard (Category B) installations under BS 7273-4:2015+A1:2021
Part number	843-4317 DorMag SmartSound